



Handcrafted for life



HOUSE OF ROHL

THE STORY CRAFT TELLS

Shaws is a member of the House of Rohl, a collection of artisan brands recognised for their artistry and heritage.

The Rohl family have spent a lifetime seeking stories of dedication, passion and craft. They have brought together diverse brands, exceptional in their category, that complement each other. Independent spirits, but shared values. A belief that quality starts with the material, design is in the detail and craftsmanship is paramount.

Distinctive stories are what makes life exceptional. At the House of Rohl, we discover time-honoured craft, revealing stories unlike any other. Stories of place and provenance. Stories of ingenuity and invention. Stories of a relentless pursuit of perfection.

Welcome to the House of Rohl®

PERRIN & ROWE | RIOBEL
SHAWS | VICTORIA + ALBERT

Explore the collection at houseofrohl.uk



Contents

Our Story	04	Inset & Undermount Sinks	32
Inspiration	06	Belthorn	34
Colours & Finishes	10	Bradshaw	34
Apron-Fronted Double Bowl Sinks	12	Brindle 600	35
Double Bowl 800	14	Brindle 800	35
Double Bowl 1000	14	Inset 600	35
Edgworth	14	Inset 800	35
Egerton	19	Round	37
Ribchester 800	19	Square	37
Ribchester 1000	19	Accessories	38
Shaker Double 800	19	Basket Strainers	40
Shaker Double 900	19	Plug and Chain	40
Shaker Double 1000	19	Overflow Kit	40
Apron-Fronted Single Bowl Sinks	20	Grids	42
Belfast	23	Handcrafted in England	46
Bowland 600	23	Our Beliefs	53
Bowland 800	23	Care & Benefits	54
Butler 600	24	Your Warranty	56
Butler 800	24		
Butler 900	24		
Butler 1000	24		
Entwistle	24		
Longridge	27		
Pendle	27		
Pennine	27		
Shaker Single 600	28		
Shaker Single 800	28		
Waterside 600	28		
Waterside 800	28		
Whitehall	28		





When Shaws of Darwen was founded in the closing years of the 19th century, we had a vision – to make the finest handcrafted fireclay sinks in the whole of England.

Today, some 125 years on, that vision has been more than realised; Shaws now enjoys, not only a national, but a worldwide reputation for the beauty, quality, craftsmanship and sheer practicality of our unique artisan products.

So much so, every handmade Shaws sink carries an impression on its base of the name of the master craftsman who created it. This, along with our Certificate of Authenticity, is your assurance that your investment has been handcrafted for life.



Inspired by the way you live.

Our sinks, as seen on your Instagram.



Shaker Double – Page 19
Posted by @treyonekitchens



Bowland – Page 23
Posted by @mark_lewis_i_d



Bowland – Page 23
Posted by @britishstandardcupboards / Credit: @just_belle

Shaker Double – Page 19
Posted by @mark_lewis_i_d



Entwistle – Page 24
Posted by @gregbirman



Shaker Double – Page 19
Posted by @gregbirman



Butler – Page 24
Posted by @kulladal20tal / Credit: @just_belle,
@mathinlundgren, @apeloga, @erika_weiland
& @aprillaprilljohanna



Shaker Double – Page 19
Posted by @hushkitchens / Credit: @pete.helme



Double Bowl – Page 14
Posted by @hushkitchens / Credit: @pete.helme

Four timeless colours for a look that suits you.

Our palette uses classic colours with modern tones
for traditional and contemporary kitchens alike.



Gloss White



Gloss Biscuit



Matt Grey



Matt Black





A kitchen with teal cabinets and a white diamond-shaped text overlay. The kitchen features teal upper and lower cabinets with brass handles. A white countertop is visible. A teal cabinet door is open, revealing a white interior with shelves holding various items, including a woven basket and a wicker basket. The floor is light-colored tile.

Apron-Fronted
Double Bowl Sinks

APRON-FRONTED DOUBLE BOWL SINKS

Double bowl sinks offer versatility in the kitchen allowing each bowl to be used for different tasks; washing the dishes, food preparation or as a general cleaning bowl.

Four Colour Options

All our sinks come in a choice of white, biscuit, matt grey and matt black.



Double Bowl

Available as 800 and 1000 wide.

Features include:

Compact double bowl sink with central dividing wall. Central 90mm waste outlets suitable for basket strainers or waste disposers. Round overflows.

Available in 4 colours.

New Gallery Collection options available on 800.

Dimensions:

Double 800 – 795 x 465 x 229mm.

Double 1000 – 995 x 465 x 229mm.

Edgworth

Features include:

Double bowl sink with offset dividing wall. Plain front. No overflows. 90mm waste outlets for basket strainers or waste disposers.

Available in 4 colours.

Dimensions:

997 x 470 x 255mm.











Egerton - Page 19

APRON-FRONTED DOUBLE BOWL SINKS

Egerton

Features include:

Double bowl sink with offset dividing wall.
Unique patterned front. No overflows.
90mm waste outlets suitable for
basket strainers or waste disposers.

Available in 4 colours.

Dimensions:

997 x 470 x 255mm.



Ribchester

Available as 800 and 1000 wide.

Features include:

Double bowl sink with central dividing wall.
Distinctive fluted front. 3 hole overflows.
90mm waste outlets suitable for basket
strainers or waste disposers.

Available in 4 colours.

Dimensions:

Ribchester 800 – 795 x 465 x 234mm.

Ribchester 1000 – 997 x 465 x 234mm.

Shaker Double

Available as 800, 900 and 1000 wide.

Features include:

Double bowl sink with dropped central dividing
wall. Central 90mm waste outlets suitable for
basket strainers or waste disposers.
Round overflows.

Available in 4 colours.

New Gallery Collection options available on 900.

Dimensions:

Shaker Double 800 – 795 x 465 x 229mm.

Shaker Double 900 – 895 x 465 x 229mm.

Shaker Double 1000 – 995 x 465 x 229mm.







Apron-Fronted
Single Bowl Sinks



Belfast – Page 23
Posted by @barneskitchens

APRON-FRONTED SINGLE BOWL SINKS

Single bowls are ideal for smaller kitchens or where washing dishes is the main task.

Four Colour Options

All our sinks come in a choice of white, biscuit, matt grey and matt black.



Belfast

Features include:

38mm waste outlet to accommodate slotted waste or a 38mm basket strainer.

Traditional Weir overflow.

Available in 4 colours.

Dimensions:

595 x 460 x 255mm.



Bowland

Available as 600 and 800 wide.

Features include:

Distinctive fluted front. 3 hole overflow.

Central 90mm waste outlet for basket strainer or waste disposer.

Available in 4 colours.

Dimensions:

Bowland 600 – 595 x 465 x 220mm.

Bowland 800 – 797 x 535 x 220mm.

APRON-FRONTED SINGLE BOWL SINKS



Butler

Available as 600, 800 and 900 wide.

Features include:

Central 90mm waste outlet suitable for basket strainer or waste disposer. Round overflow.

Available in 4 colours.

New Gallery Collection options available on 600 and 800.

Dimensions:

Butler 600 – 595 x 460 x 255mm.

Butler 800 – 795 x 460 x 255mm.

Butler 900 – 838 x 460 x 255mm.

Butler 1000

Features include:

Offset 90mm waste outlet suitable for basket strainer or waste disposer. Round overflow.

Available in 4 colours.

Dimensions:

914 x 460 x 255mm.



Entwistle

Features include:

Large single bowl sink. Unique patterned front. 3 hole overflow. Standard 90mm waste outlet to accommodate basket strainer or waste disposer.

Available in 4 colours.

Dimensions:

760 x 460 x 255mm.



Butler – Page 24

Posted by @kulladal20tal / Credit: @just_belle, @mathinlundgren,
@apeloga, @erika_weiland & @aprilprilljohanna



Butler – Page 24
Posted by @hushkitchens / Credit: @pete.helme

APRON-FRONTED SINGLE BOWL SINKS



Longridge

Features include:

Integral drainer. 3 hole overflow. 90mm waste outlet suitable for basket or waste disposer.

Available in 4 colours.

Dimensions:

897 x 460 x 240mm

Pendle

Features include:

Slim wall single bowl sink with 38mm waste outlet to accommodate slotted waste or a 38mm basket strainer.

Weir overflow.

Available in 4 colours.

Dimensions:

595 x 460 x 255mm.



Pennine

Features include:

Weir overflow. 90mm waste outlet suitable for basket strainer or waste disposer. Special overflow adaptor kit to fit waste disposer or basket strainer.

Available in 4 colours.

Dimensions:

595 x 460 x 255mm.

APRON-FRONTED SINGLE BOWL SINKS



Shaker Single

Available as 600 and 800 wide.

Features include:

Single bowl sink with central 90mm waste outlet suitable for basket strainer or waste disposer. Round overflow.

Available in 4 colours.

New Gallery Collection options available on 800.

Dimensions:

Shaker Single 600 – 595 x 460 x 255mm.

Shaker Single 800 – 762 x 457 x 284mm.

Waterside

Available as 600 and 800 wide.

Features include:

Bow fronted single bowl sink with 90mm waste outlet to accommodate basket strainer or waste disposer. Round overflow.

Available in 4 colours.

Dimensions:

Waterside 600 – 597 x 530 x 220mm.

Waterside 800 – 760 x 530 x 255mm.



Whitehall

Features include:

Deep, generous single bowl sink that is suitable for laminate worktops. Central 90mm waste outlet suitable for basket strainer or waste disposer. Round overflow.

Available in 4 colours.

Dimensions:

595 x 470 x 310mm.



Waterside – Page 28
Posted by @barneskitchens





THE
– GALLERY –
COLLECTION

A collection of seven artistic designs
that can be applied to five of our most iconic sinks.

[See our website for details.](#)





Inset &
Undermount Sinks

INSET & UNDERMOUNT SINKS

Beautiful and practical, these elegant, handcrafted products can be either inset or undermounted with any solid work surface such as granite, marble, quartz or solid wood.

Four Colour Options

All our sinks come in a choice of white, biscuit, matt grey and matt black.



Belthorn

Features include:

Inset or undermount sink. No overflow.
Central 90mm waste outlet suitable for basket strainer or waste disposer.

Available in 4 colours.

Dimensions:

381 x 381 x 191mm.



Bradshaw

Features include:

Double bowl sink with offset low dividing wall. Round overflow.
Central 90mm waste outlets suitable for basket strainers or waste disposers.

Available in 4 colours.

Dimensions:

838 x 476 x 244mm.



Brindle

Available as 600 and 800 wide.

Features include:

Inset or undermount sink. Round overflow. 90mm waste outlets suitable for basket strainers or waste disposers.

Available in 4 colours.

Dimensions:

Brindle 600 – 548 x 500 x 225mm.

Brindle 800 – 760 x 500 x 225mm.

Inset

Available as 600 and 800 wide.

Features include:

Inset or undermount sink. Round overflow. Central 90mm waste outlet suitable for basket strainer or waste disposer.

Available in 4 colours.

Dimensions:

Inset 600 – 595 x 460 x 255mm.

Inset 800 – 760 x 460 x 265mm.



Square – Page 37
Posted by @treylenekitchens



INSET & UNDERMOUNT SINKS



Round

Features include:

Inset or undermount sink. Round overflow.
Central 90mm waste outlet suitable
for basket strainer or waste disposer.

Available in 4 colours.

Dimensions:

460 diameter x 191mm.

Square

Features include:

Inset or undermount sink. Round overflow.
Central 90mm waste outlet suitable
for basket strainer or waste disposer.

Available in 4 colours.

Dimensions:

460 x 460 x 191mm.







Accessories

ACCESSORIES

PLUGS & STRAINERS

A wide collection of accessories and accompaniments that have been carefully selected for their quality, function and style.

For our full range of accessories and products to lovingly care for your Shaws products, visit our website.



Basket Strainers

Available as 38mm and 90mm.

Designed to compliment our sink ranges, our elegant 90mm basket strainers are available in five finishes. We also offer a 38mm strainer specifically designed to suit our Belfast and Pendle sinks.

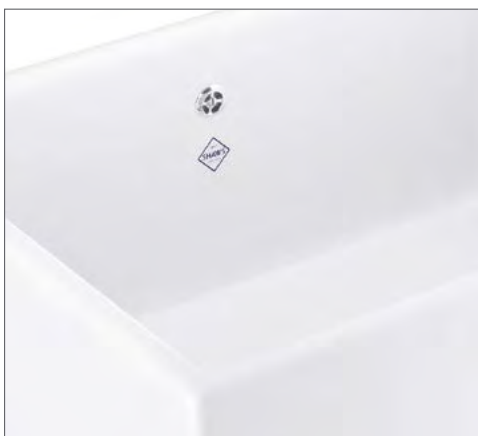
Available in 5 finishes.

Chrome | Gold | Polished Nickel
Brushed Nickel | Antique Bronze

Plug & Chain

Our simple plugs and chains are available in a chrome finish.

Designed to suit our Belfast and Pendle sinks.
Available in chrome only.



Overflow Kit

This kit is included with every sink purchase, however, it is available to purchase as a replacement, if necessary.



ACCESSORIES

STAINLESS STEEL SINK GRIDS

Our stainless steel sink grids are designed to protect your Shaws sink. Available in nine sizes, simply choose the one compatible with your sinks.



Type 1

Dimensions:

669mm (W) x 351mm (D) x 26mm (H).

Compatible with:

Butler 800, Entwistle, Bowland 800, Shaker Single 800, Inset 800.



Type 2

Dimensions:

480mm (W) x 351mm (D) x 26mm (H).

Compatible with:

Pennine, Belfast, Pendle.



Type 3

Dimensions:

480mm (W) x 351mm (D) x 26mm (H).

Compatible with:

Butler 600, Bowland 600, Inset 600.



Type 4

Dimensions:

328mm (W) x 335mm (D) x 26mm (H).

Compatible with:

Ribchester 800 (left/right bowl), Ribchester 1000 (left/right bowl), Double Bowl 800 (left/right bowl), Double Bowl 1000 (left/right bowl), Shaker 800 Double Bowl (left/right bowl), Shaker 900 Double Bowl (left/right bowl), Shaker 1000 (left/right bowl), Square.



Type 5

Dimensions:

271mm (W) x 373mm (D) x 26mm (H).

Compatible with:

Edgworth (right bowl), Egerton (right bowl).



Type 6

Dimensions:

556mm (W) x 373mm (D) x 26mm (H).

Compatible with:

Edgworth (left bowl), Egerton (left bowl).



Type 7

Dimensions:

518mm (W) x 434mm (D) x 26mm (H).

Compatible with:

Waterside 600.



Type 8

Dimensions:

670mm (W) x 434mm (D) x 26mm (H).

Compatible with:

Waterside 800.



Type 9

Dimensions:

822mm (W) x 375mm (D) x 26mm (H).

Compatible with:

Butler 1000.



HANDCRAFTED
1897
◆ SHAW'S ◆
ENGLAND
FOR 125 YEARS



OUR PROCESS

Handcrafted

the same way for 125 years

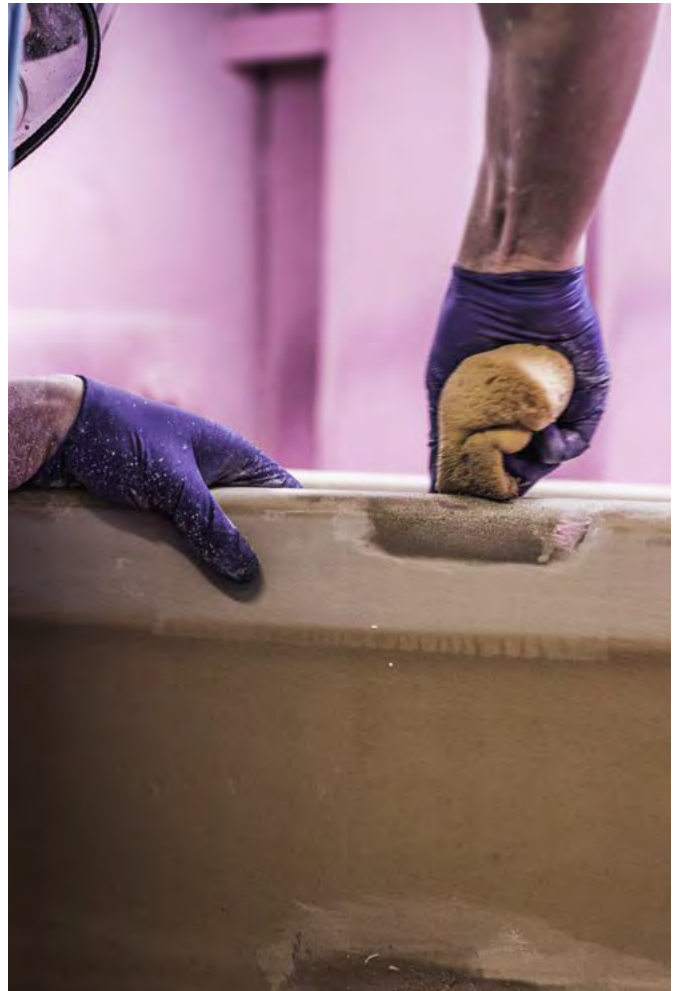
Iconic, timeless, aspirational and tactile, each sink is an original design, handcrafted to give a lifetime of service and pleasure.

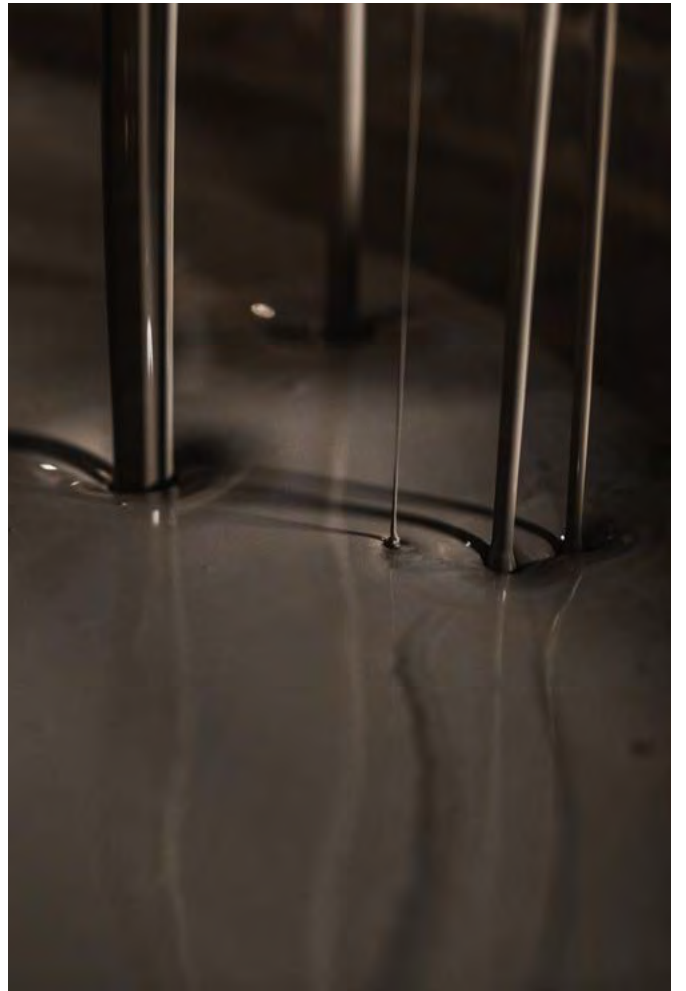
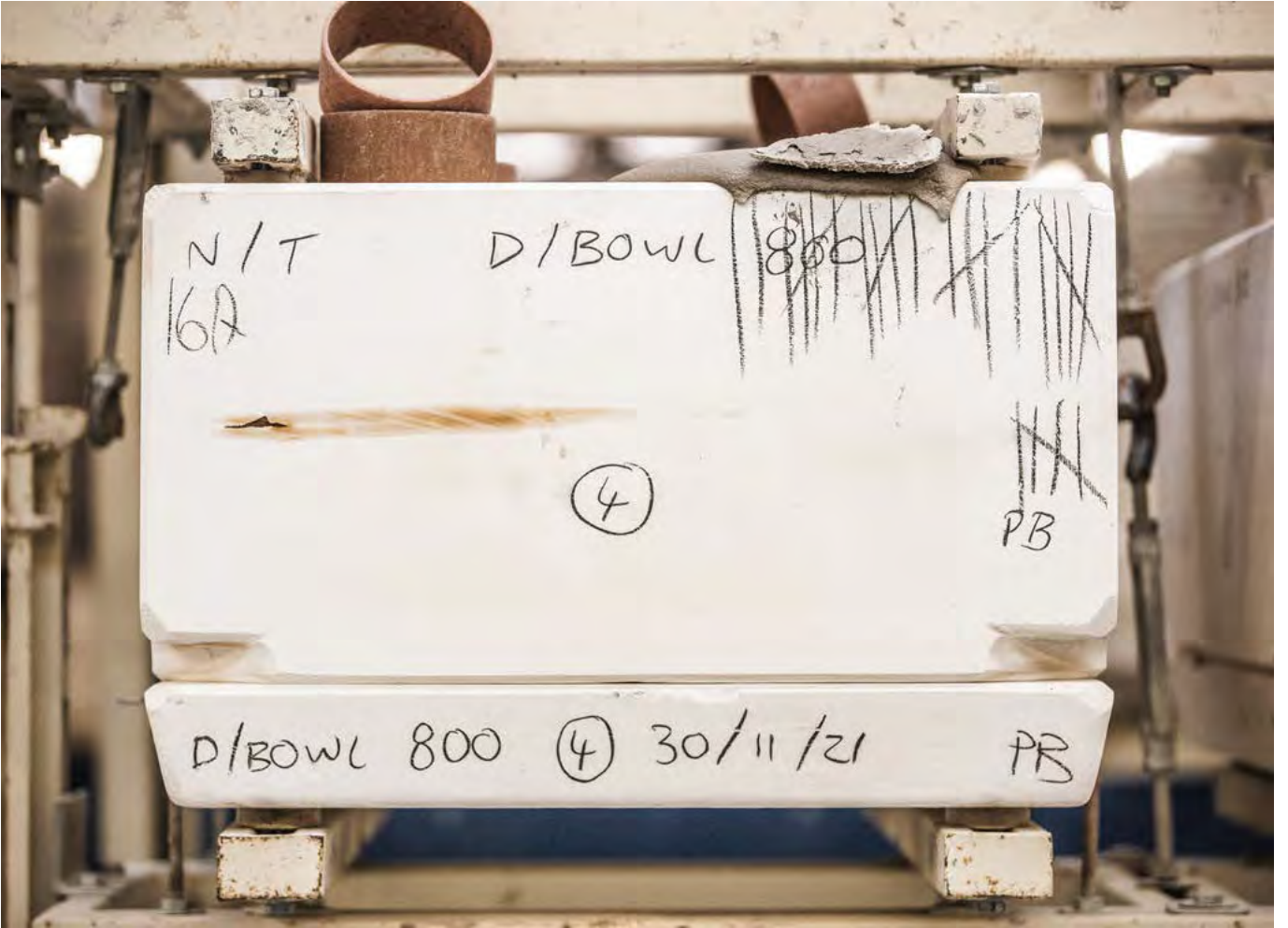
At Shaws we don't believe in mass production; we believe in quality, individuality and authenticity in all we do. It takes time to hand-make Shaws sinks, between three to four weeks in total, using time-honoured techniques that have been passed down from master craftsman to apprentice for well over a century.

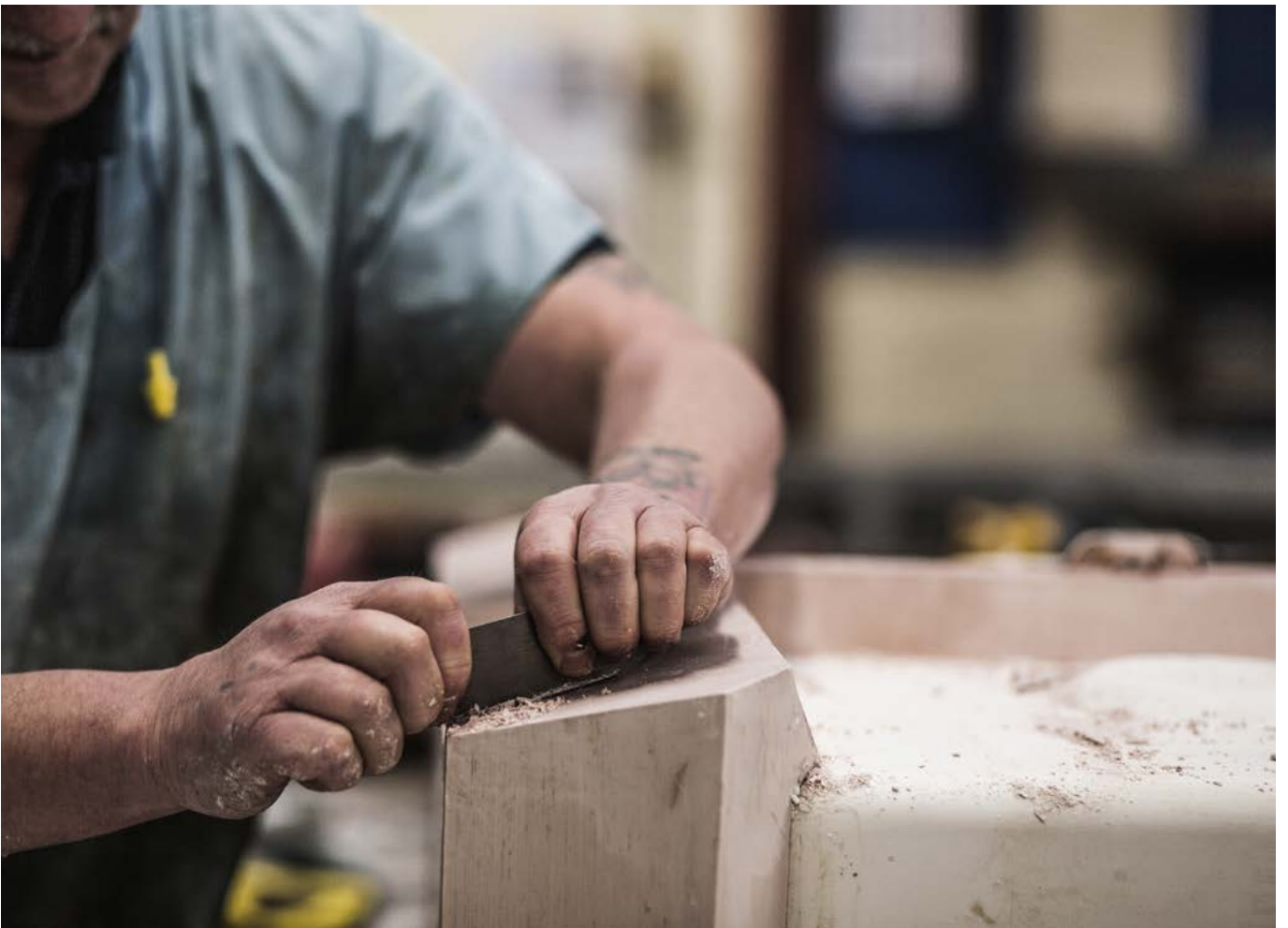
Known as 'slip casting', the process begins with a mixture of locally sourced clay and water being poured into porous moulds – by hand, naturally.

When the newly formed sinks are dry enough, craftsmen remove them from their moulds before getting to work doing what they do best – expertly hand-finishing these artisan products through a process of sponging and 'fettling' to create a smooth surface.

It's at this stage that the master craftsman proudly imprints his name on the base of his creation, before leaving the sink to gradually dry out for a period of over 40 hours. Only then are the sinks deemed ready to be prepared with a first coat of glaze, before being glazed for a second time to improve the feel and durability of the product. Firing in specially designed kilns at temperatures of over 1,200 degrees Celsius completes this rigorous process.







Our heritage is reflected in the names we give our products today. These are carefully selected as a tribute to the local communities and villages that have provided homes for our craftsmen and their families for 125 years.







OUR BELIEFS

Our promise

We believe wholeheartedly
in delivering on our promise:

**To make the most beautiful, practical,
handcrafted fireclay sinks in the world.**

We believe in being authentic in all we do, using traditional, time-honoured techniques to produce iconic products that grace the finest establishments and homes the world over.

We believe that our reputation for delivering quality and reliability is as important as producing timeless and elegant design pieces; that's why every Shaws sink comes with a lifetime guarantee.

We believe that every sink that bears the Shaws name should be a thing of beauty, a unique creation, with a charm and character all of its own, bearing testament to the skill and expertise of the master craftsman who lovingly and painstakingly created it.

All Shaws fireclay products *are handcrafted for life.*

Caring for your Shaws sink

Shaws sinks are proven to be incredibly durable and long-lasting. To keep your investment looking at its best, we recommend it be cleaned daily using a soft sponge or cloth and a non-abrasive cleaning product – a simple solution of soap and water generally does an excellent job.

Although extremely hardwearing (being heatproof, resistant to impact, chemicals, dirt, stain and odours) not even a Shaws fireclay sink is impervious to damage.

So, if a metal pan or cutlery marks the surface of your pride and joy, we have a range of accessories that will easily restore it to its original beauty.





Built for Endurance



ODOUR
RESISTANT



HEAT
RESISTANT



IMPACT
RESISTANT



CHEMICAL
RESISTANT



DIRT & STAIN
RESISTANT

Designed for Reassurance



NATURAL MATERIAL



LIFETIME
WARRANTY



WASTE DISPOSAL
COMPATIBLE



ANTIBACTERIAL



RECYCLABLE

Our Warranty

At Shaws our promise to you is to provide the best sinks in the world, backed up with outstanding personal customer service.

That's why all our products are not only of exceptional quality, but carry comprehensive warranties to give you total peace-of-mind.



All Shaws sinks carry a **Lifetime** Warranty

PLEASE NOTE, our sink dimensions can vary by a plus or minus of 2%, as they are hand-made and shrink during firing. We therefore recommend that your kitchen fitter is aware of this and that no work surfaces or cabinets are cut before measuring your sink. Due to the handcrafted nature and weight of our sinks, we also recommend a specialist kitchen fitter installs your sink and that it is properly supported.

Please see website for warranty details of our sinks, taps and accessories.

www.shawsofdarwen.com



HOUSE OF ROHL

PERRIN & ROWE | RIOBEL
SHAWS | VICTORIA + ALBERT



A DISTINCTIVE
MEMBER OF THE
HOUSE OF ROHL®

Shaws of Darwen. Waterside, Darwen, Lancashire, England, BB3 3NX. Telephone. +44 (0)1254 775111.

WWW.SHAWSOFDARWEN.COM